

# COMUNE DI PESCARA

## INTERVENTO EDILIZIO

Strada Cavallaro - Via Di Girolamo  
PER EDIFICI DI EDILIZIA RESIDENZIALE

Ditta:  
Fusilli Lidia

PIANTA TIPOLOGIE EDILIZIE  
VERIFICA SUPERFICI DI PROGETTO

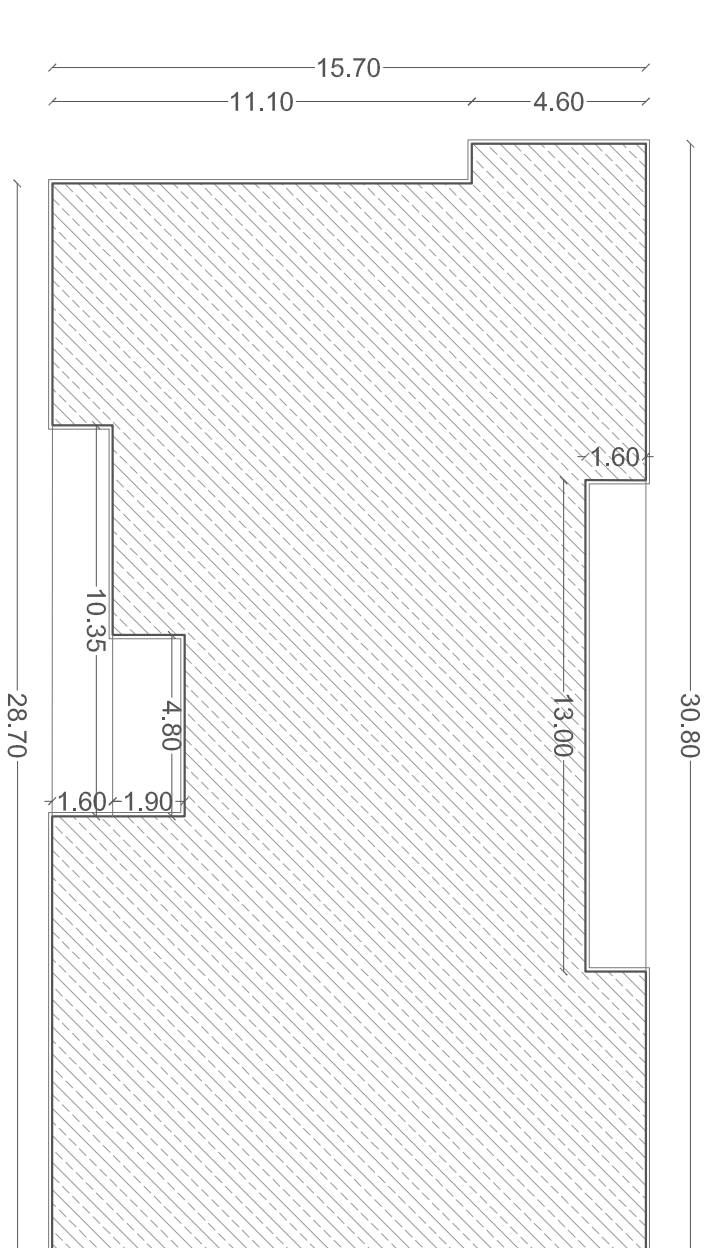
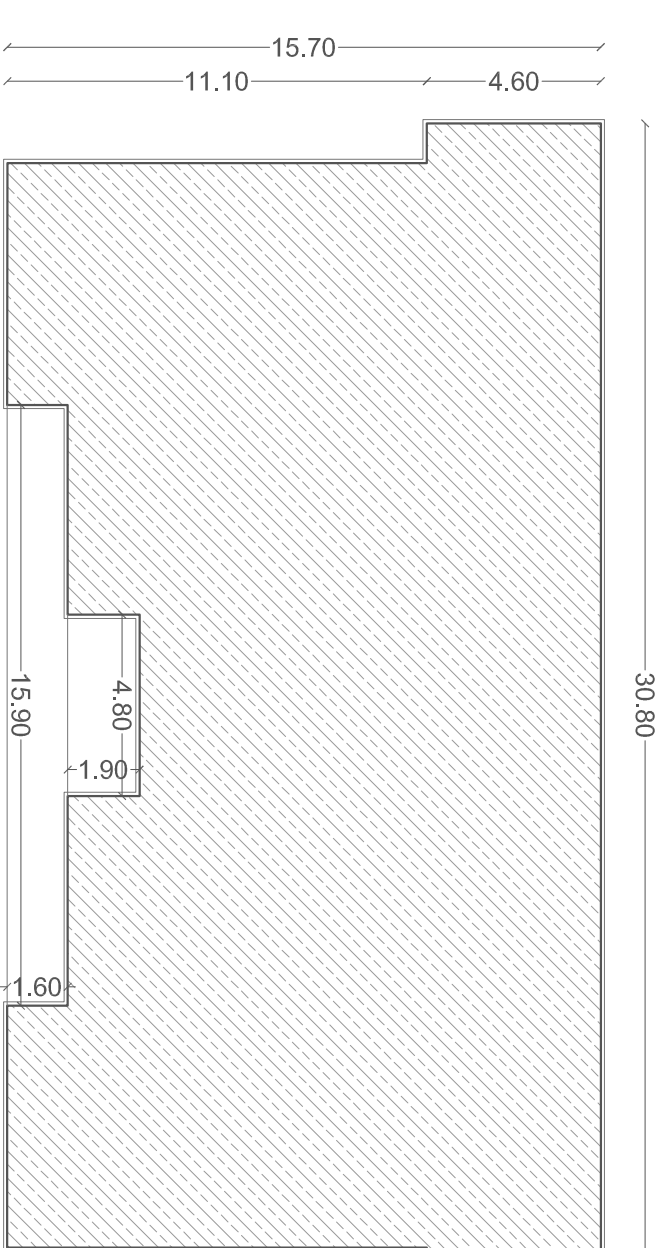
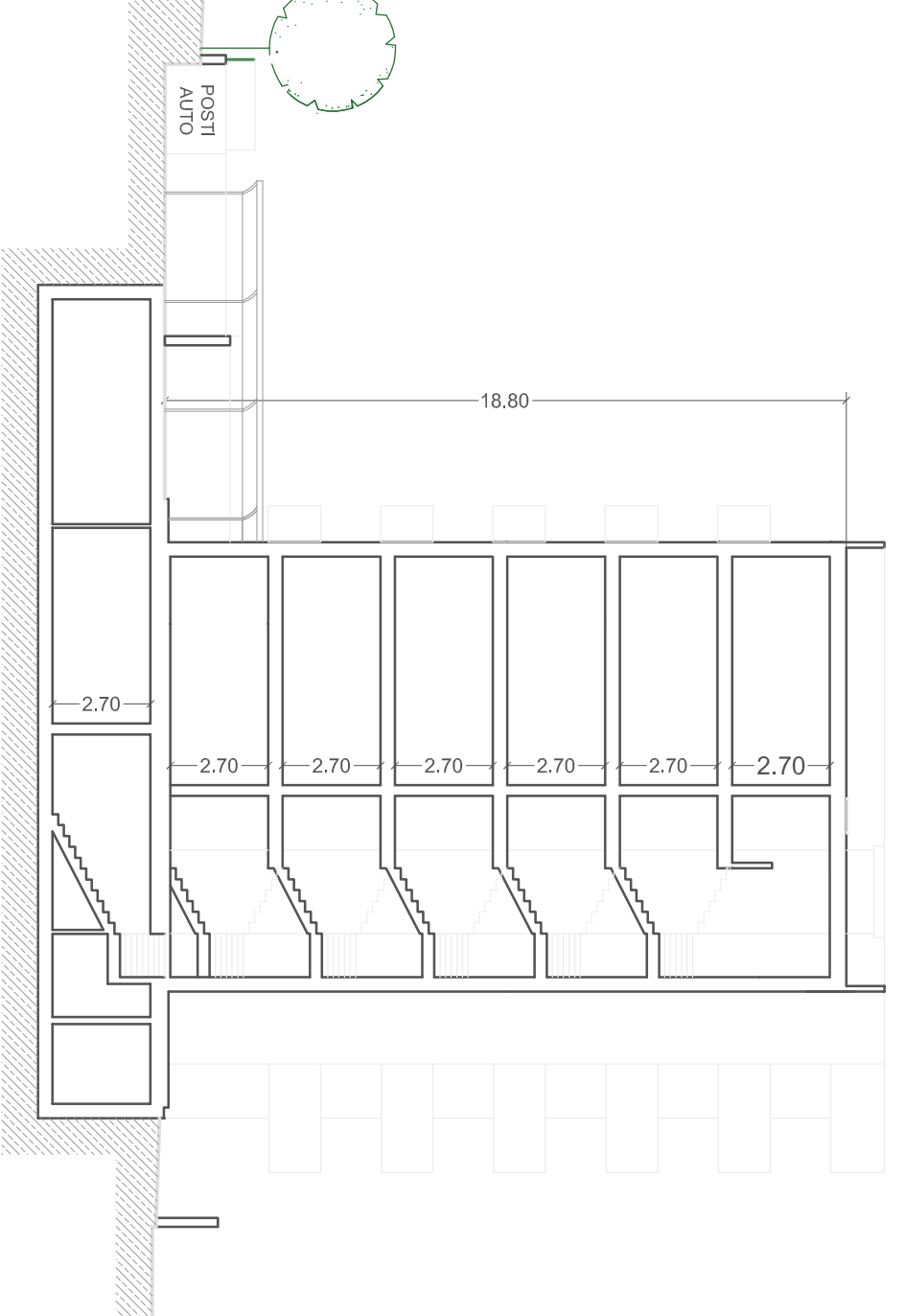
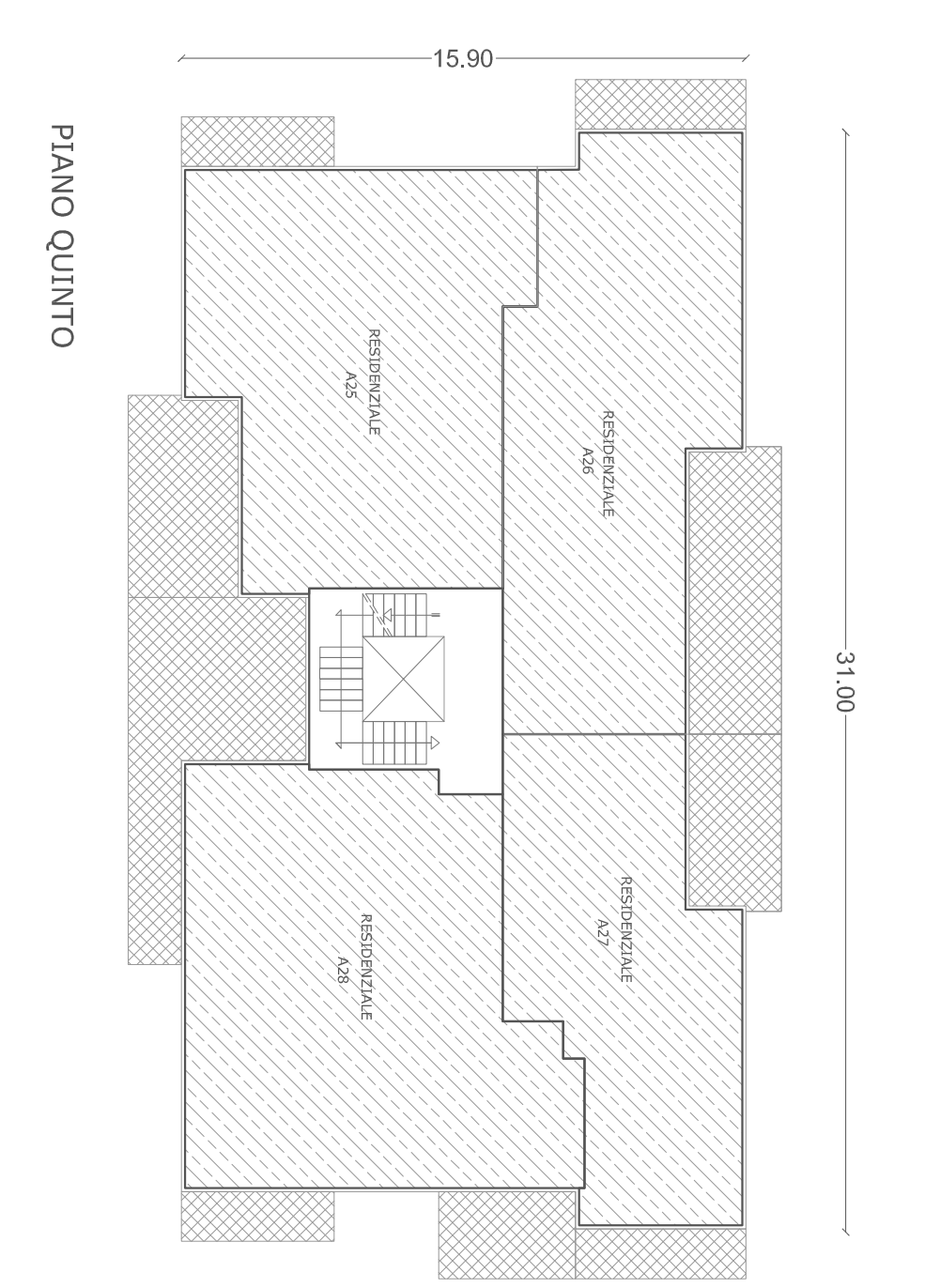
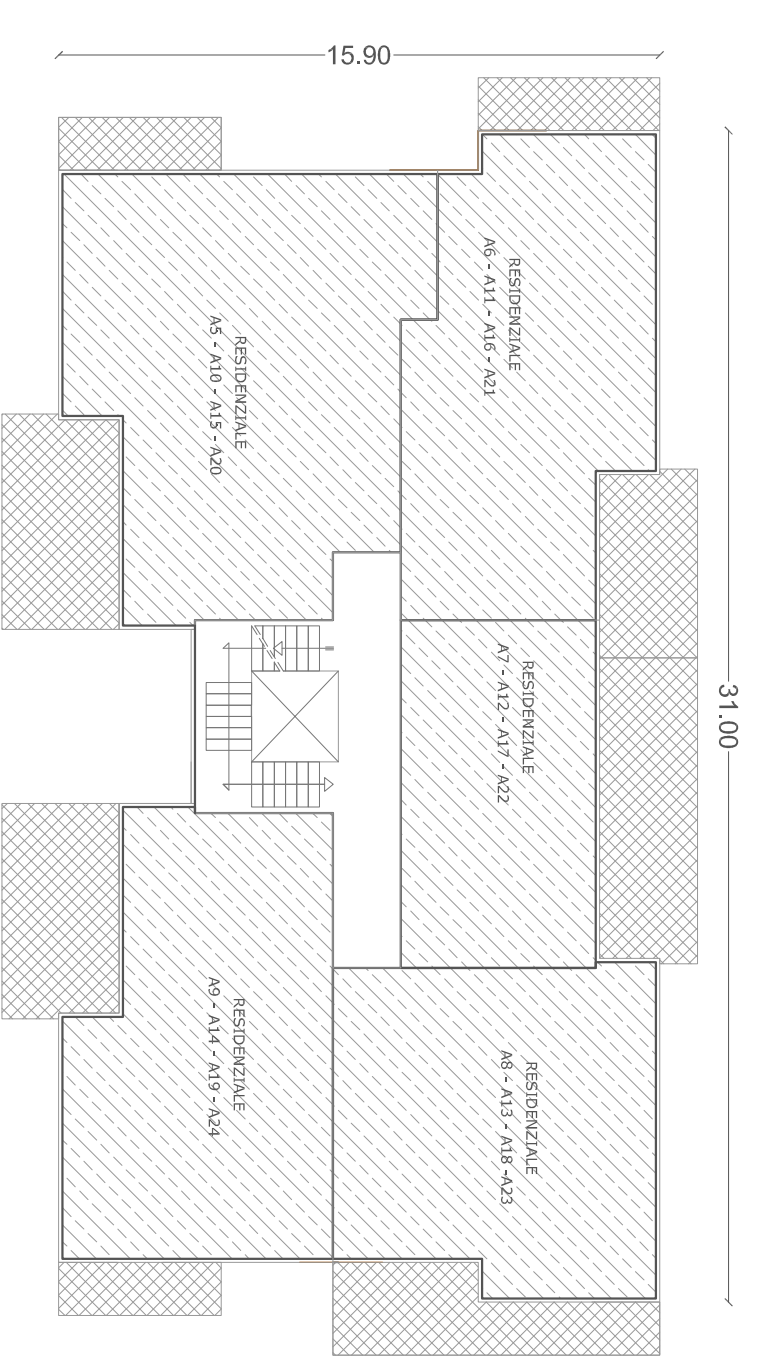
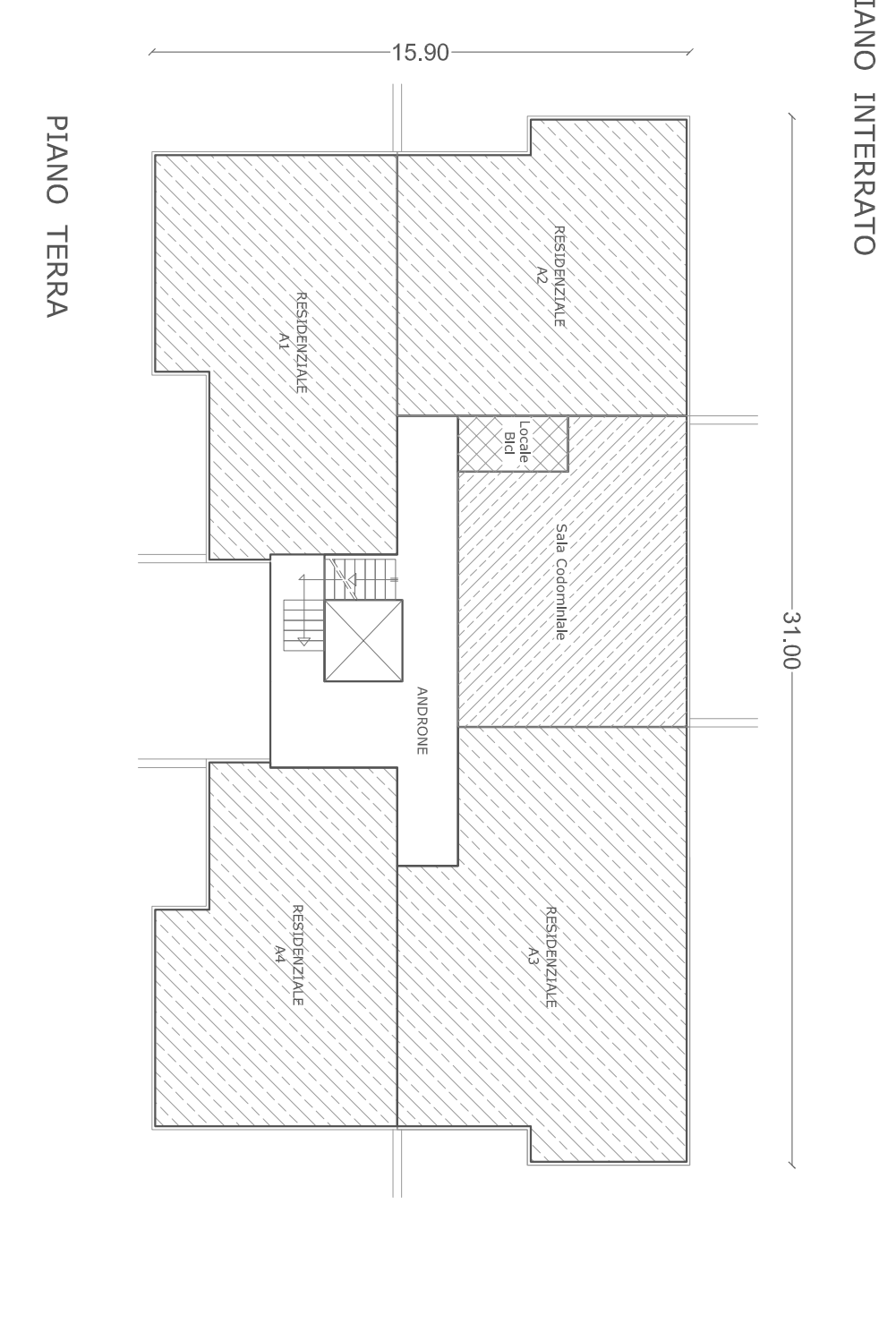
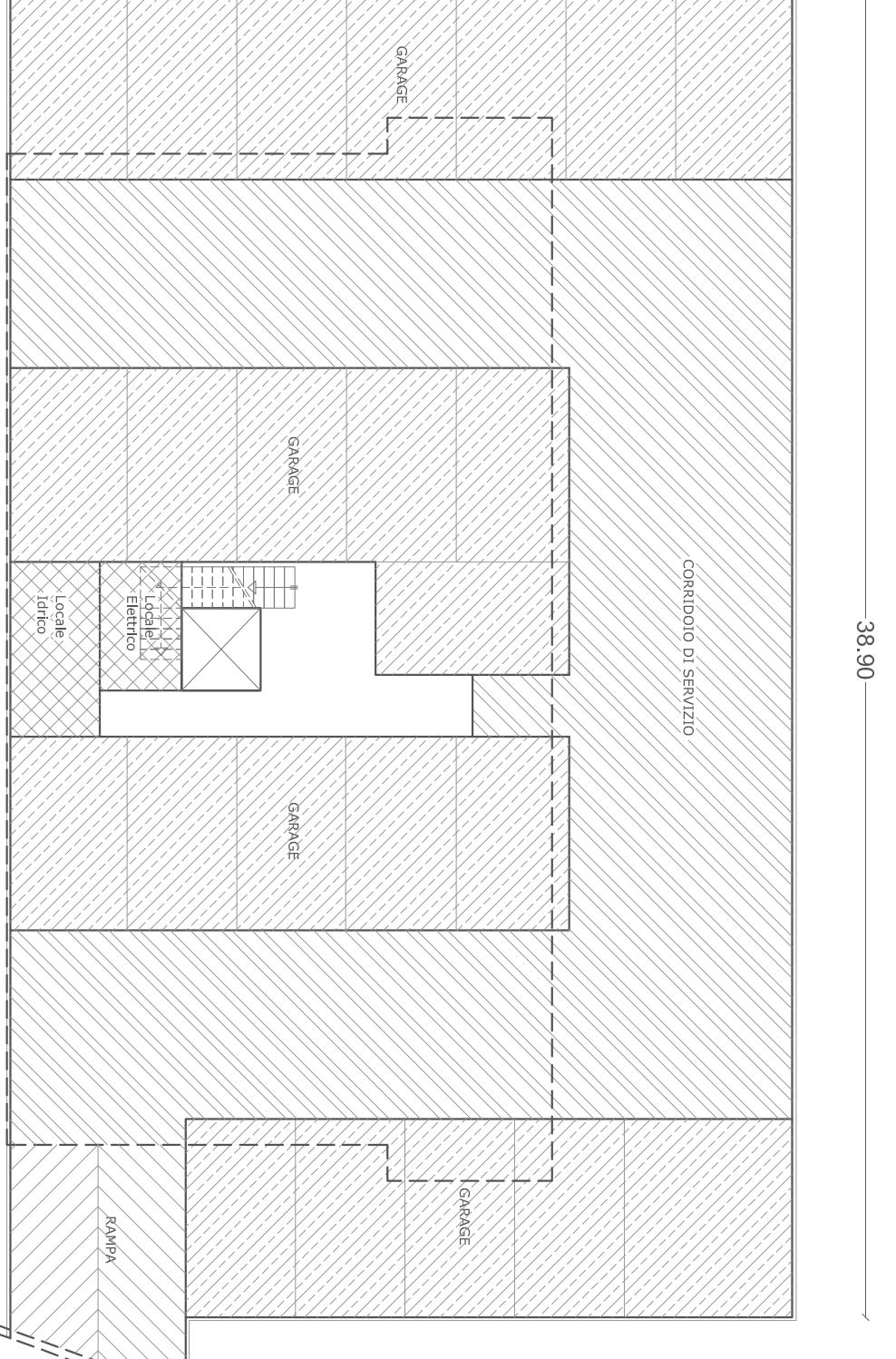
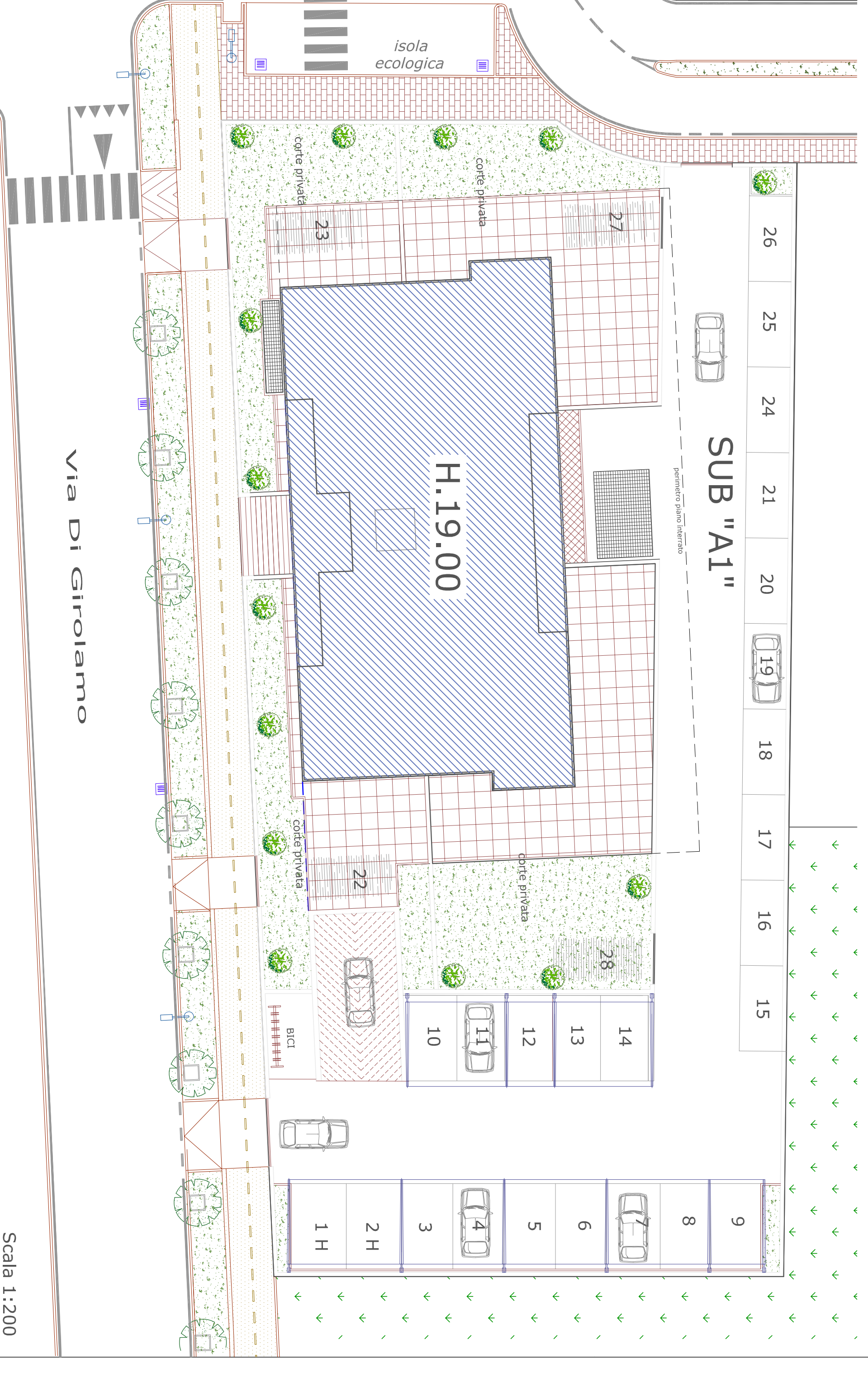
TAV. 6

SCALA: 1:200  
DATA : Giugno 2020  
Aggiornamento Dicembre 2020

Il Tecnico  
Incaricato

Pescara -Via T. Tasso n° 5 - Tel. - Fax 085.2059110 email studio.cedipica@infidil.it

### PLANIMETRIA LOTTO EDIFICABILE SUB AMBITO A

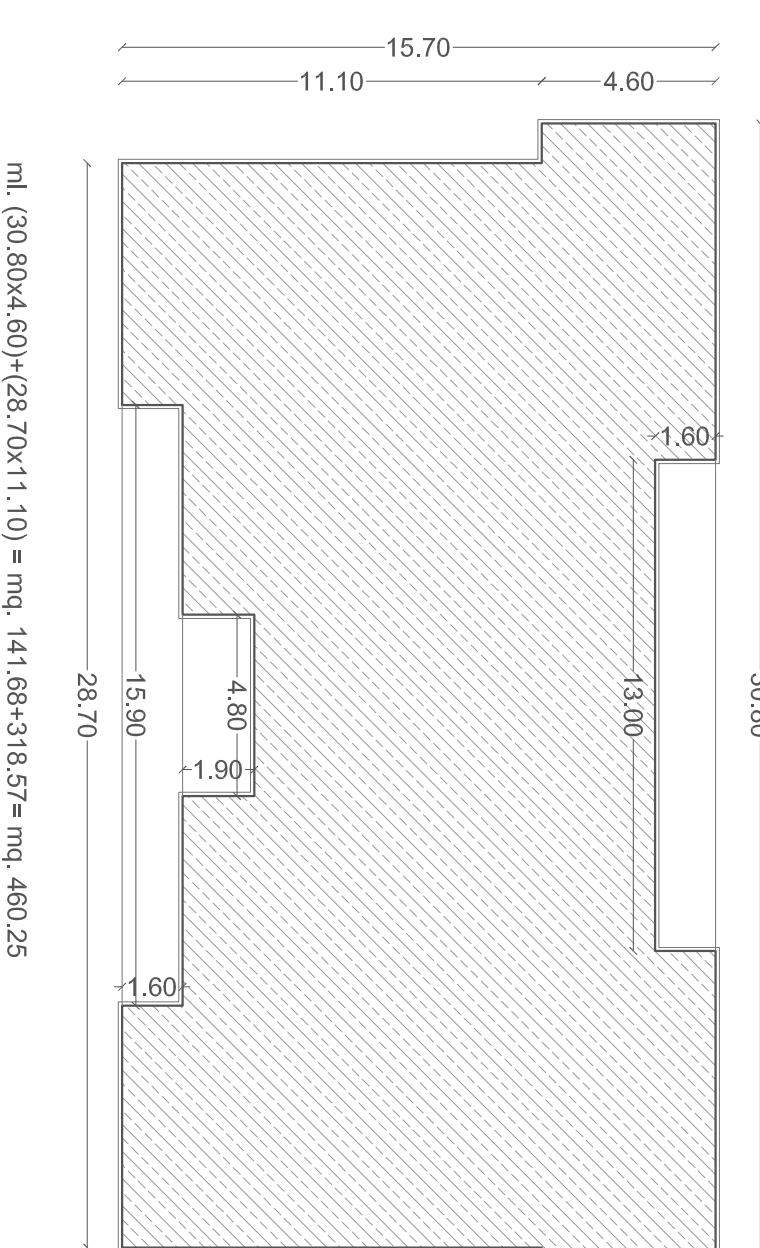


ml. (30,80x4,60)+(28,70x11,10) = mq. 141,66+318,57= mq. 460,25  
 a.deterare  
 ml. (4,80x1,90)+(15,90x1,60)= mq. 9,12+25,44=mq. 34,56  
 mq. 460,25 - 34,56= mq. 425,69

ml. (30,80x4,60)+(28,70x11,10) = mq. 141,66+318,57= mq. 460,25  
 a.deterare  
 ml. (13,00x1,60)+(4,80x1,90)+(10,35x1,60)= mq. 20,80+9,12+16,53=mq. 46,48  
 mq. 460,25 - 46,48= mq. 413,77

### VERIFICA SUPERFICI DI PROGETTO

PIANO TERRA	= MQ. 425,69
PIANO PRIMO	= MQ. 404,89
PIANO SECONDO	= MQ. 404,89
PIANO TERZO	= MQ. 404,89
PIANO QUARTO	= MQ. 404,89
PIANO QUINTO	= MQ. 413,77
SUP. TOTALE	= MQ. 2459,02
MQ. 2459,02 < MQ. 2461,00 SUPERFICIE MAX	



ml. (30,80x4,60)+(28,70x11,10) = mq. 141,66+318,57= mq. 460,25  
 a.deterare  
 ml. (13,00x1,60)+(4,80x1,90)+(15,90x1,60)= mq. 20,80+9,12+25,44=mq. 55,36  
 mq. 460,25 - 55,36= mq. 404,89